

Arts and Science

Art has been taught at the College from the start but a resident art master was not appointed until 1929 under the headmastership of Gordon Carey.

From the 1920s the art department was based in the Memorial Buildings but moved into new premises in the current art block (named after former pupil, Sir Hugh Casson) in 1980, pictured right.



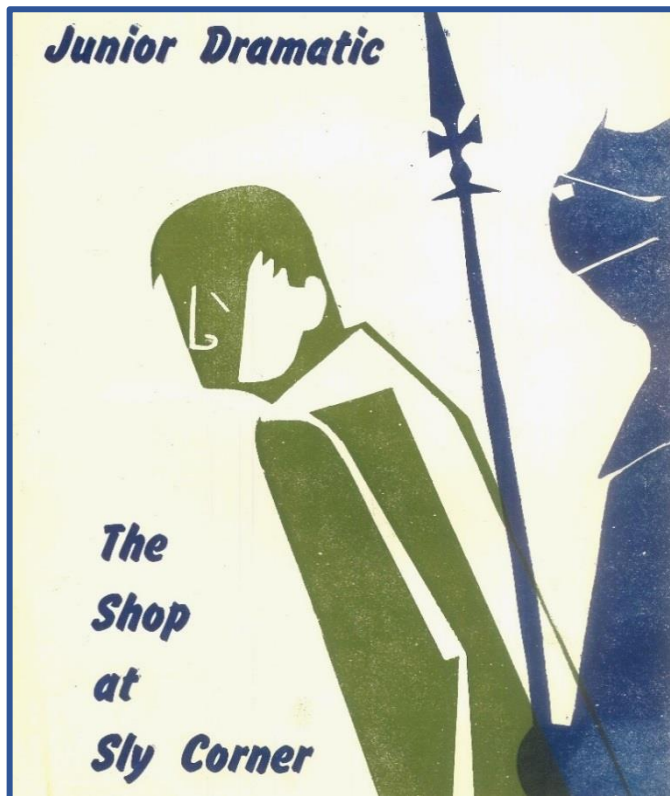
Music, too, plays an important part of College life. Once again it was Carey who revived its fortunes at the school by appointing its first full-time Director of Music in 1931. Superb facilities for the music department and the arts are provided at the Birley Centre which was opened in 2011.

The College has always invested in its science departments, building their first laboratories in the 1880s. Further investment came in the late 1950s and in 2002 when a brand new science centre opened.

Drama

After some success in the 1880s, no plays were performed until the Eastbourne College Dramatic Society was established at Radley during the Second World War.

*'The Heir at Law', 1882,
with boys playing female characters*



*'The Importance of Being Earnest',
with John Wells (Powell 1950-55),
satirist and writer, as Miss Prism*

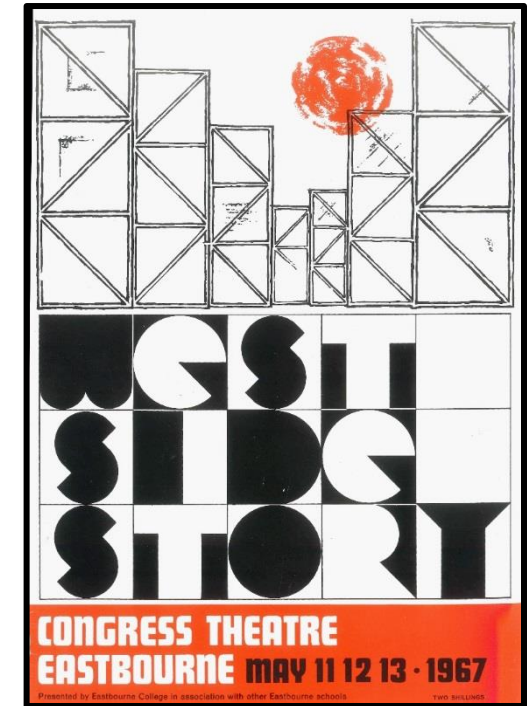
*One of the College's Junior
Dramatic Club's productions*



Musicals

To help celebrate the College's 100th anniversary in 1967, Headmaster Michael Birley organised a production of *West Side Story* in which other Eastbourne schools were invited to appear.

During later years, Philip Le Brocq was the driving force behind many musicals produced at the College, a tradition continued by current Director of Drama Tim Marriott.



'The Boyfriend', 1986

'I Love You Because', 2014



Actors and Entertainers



Patti Clare
(Nugent 1983-85),
Mary Taylor in
Coronation Street

Eddie Izzard
(Pennell 1975-80)



Ed Speleers (Wargrave 2001-06),
Jimmy Kent in *Downton Abbey*



Hugh Skinner (Pennell 1998-2003),
W1A, *The Windsors*, *Poldark*

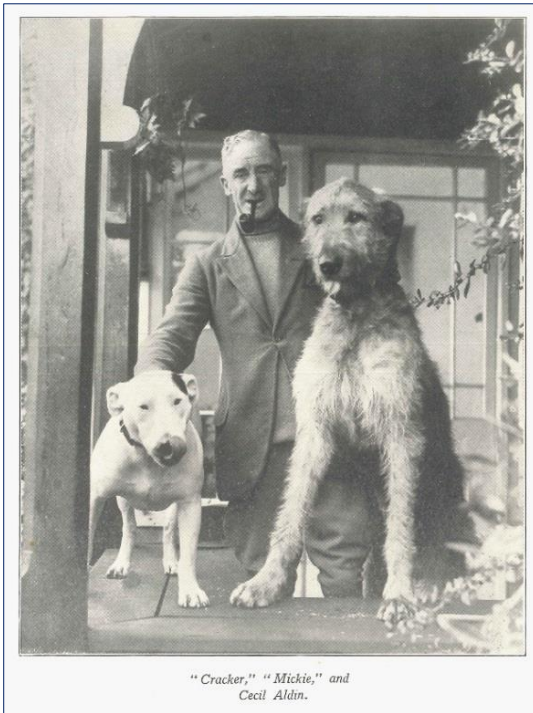
Michael Praed
(Gonville 1973-78)
in *Oklahoma!*
at the College
in 1978



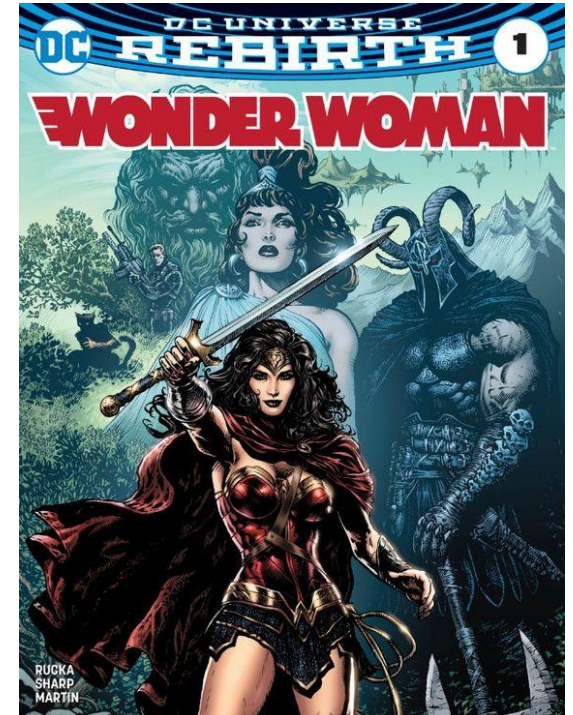
Artists

Cecil Aldin (School 1880)

An artist best known for his paintings and sketches of animals, sports and rural life.



Liam Sharpe (Pennell 1981-86),
author and artist of comics and graphic novels

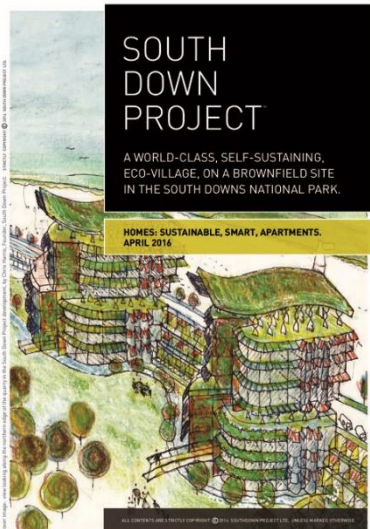


Architects

Sir Hugh Casson (School 1924-27)

Architect, artist and broadcaster, Casson was the Director of Architecture at the 1951 Festival of Britain and designed the lych gate at Paradise Drive, Eastbourne, as a memorial to former pupils killed in the Second World War. The College art block was named after him.

Festival of Britain, 1951



Chris Harris (Reeves 1948-51)

He worked for eight years in Casson's office and later joined the practice of Sir Denys Lasdun - designer of London's National Theatre. Harris is currently involved with the South Down Project, which will transform the derelict Shoreham cement works into an 'eco-village' with homes, offices, shops and restaurants.

Music

Ian Fraser (Pennell 1945-51)

Composer, conductor and music director. Winner of eleven Emmys (American television awards) he worked with such stars as Julie Andrews, Anthony Newley and Bing Crosby. One of his Emmy awards and Oscar nomination certificate are on display in the Birley Centre.



Jules Knight (Pennell 1995-2000) sang with the classical vocal group Blake and also starred as Dr Harry Tressler in *Holby City*.

Will Rendle (Wargrave 1999-2004)

Will formed his own band, Will and the People, in 2005. The band has toured extensively throughout the UK and the world. He describes his music as a combination of reggae, ska and rock.

Science

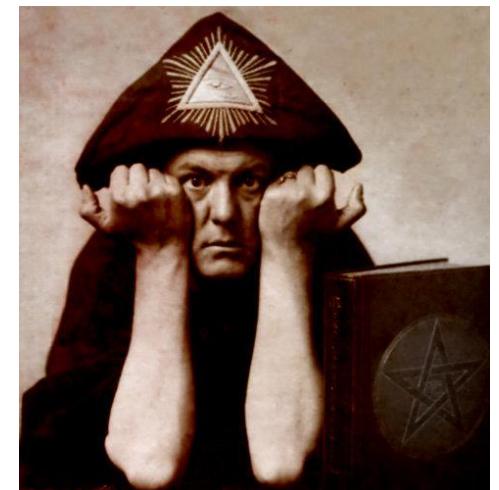
Frederick Soddy (Home Boarder 1893-94)



Soddy was born in Eastbourne (the house still stands in Bolton Road). A pioneer in the field of radioactivity, he gained First Class honours in Chemistry at Oxford University and went on to formulate the concept of isotopes. Later in his career he was made Professor of Chemistry at Oxford and in 1922 received the Nobel Prize for his contribution to science. In 1981 Sweden honoured his achievements by producing a stamp with his portrait on.

Aleister Crowley

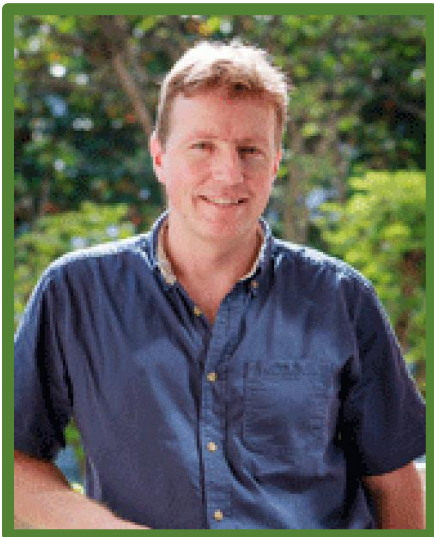
Occultist, poet and novelist. Despite various myths, Crowley did not attend as a pupil nor teach at the College. He assisted the Head of Science, Robert Edward Hughes, in the chemistry laboratory.



Medicine

Forbes Manson Grant Tulloch (Home Boarder 1894-96)

An army doctor, he travelled to Africa with a team of Royal Army Medical Corps officers to carry out research into the causes and prevention of sleeping sickness. While carrying out his research, he accidentally cut himself and died from an infection. Following his death, a medal was struck in his honour and was presented by the RAMC as a prize for pathology. A window (by Mary Lowndes) was placed in the College chapel in his memory and the College medical centre is named after him.



Guy Thwaites (Blackwater 1984-89)

Dr Thwaites trained at Guys Hospital, London, and the Hospital for Tropical Diseases among others. As an infectious diseases physician and microbiologist he specialises in bacterial infections, especially those involving the central nervous system. He is Professor of Infectious Diseases at Oxford University, sponsored by the Wellcome Foundation, and is currently working in Vietnam for the Oxford University Clinical Research Unit.

