

Eastbourne College Charity

Appeals campaigns

Thanks to the generous support of the College community over 150 years (pupils, OEs, parents, staff, friends and neighbours) the College provides superb facilities for all who work, learn and live on the site.



The 1915 Jubilee and War Memorial Fund resulted in the building of the Memorial Building



The 1907 appeal led to the opening of Big School in 1909

Results of appeals in the 1940s



*The music school
1955*

*Metal and
woodwork
workshops*



Second World War appeal

Money raised helped purchase the site of St Cyprian's now known as the Memorial Ground.

The lych gate at the Memorial Ground

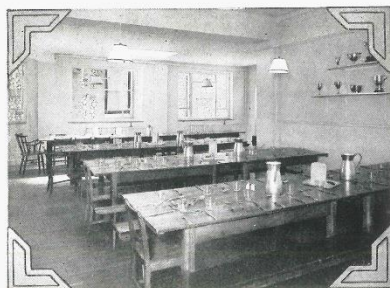


The 1957 appeal

The College . .

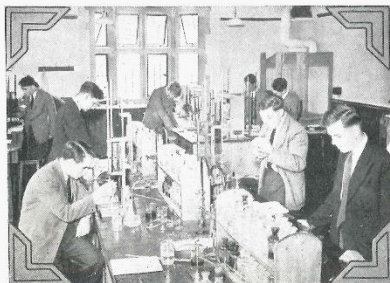
. . TODAY

NEEDS
£100,000



The new extension to Wargrave Dining Hall.

The present Senior Chemistry Laboratory, modernised in 1955. It was partly because the sponsors of the Industrial Fund saw that we were helping ourselves that they decided to help us. They are generously giving about £20,000; our programme of building and alteration will cost us rather more than that amount again.



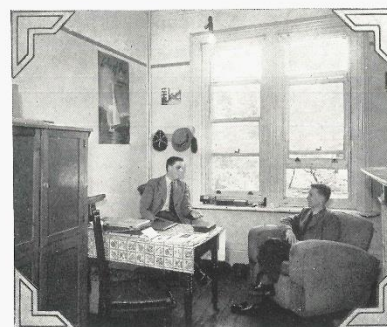
WE HAVE BEEN ENDEAVOURING TO
These photographs will show you some of the
would have attempted such a programme—only



For ten years we had to use the huts left by the Navy in the Wish. At last we have built this Carpentry and Metal Workshop, and the huts have gone. The new Gymnasium will also go in the Wish.

Only the generation of today can
yet to come. The school has always
to you—please help the college as

ACHIEVE THE IMPOSSIBLE TOO LONG.
things we have done already. Only Eastbourne
Eastbourne could have succeeded!



The Prefects' Study in Nugent House, the new "waiting" House. We need more studies in every House, and particularly some as spacious as this for the more senior boys.

safeguard the interests of generations
looked to the future, but now it looks
once it helped you!



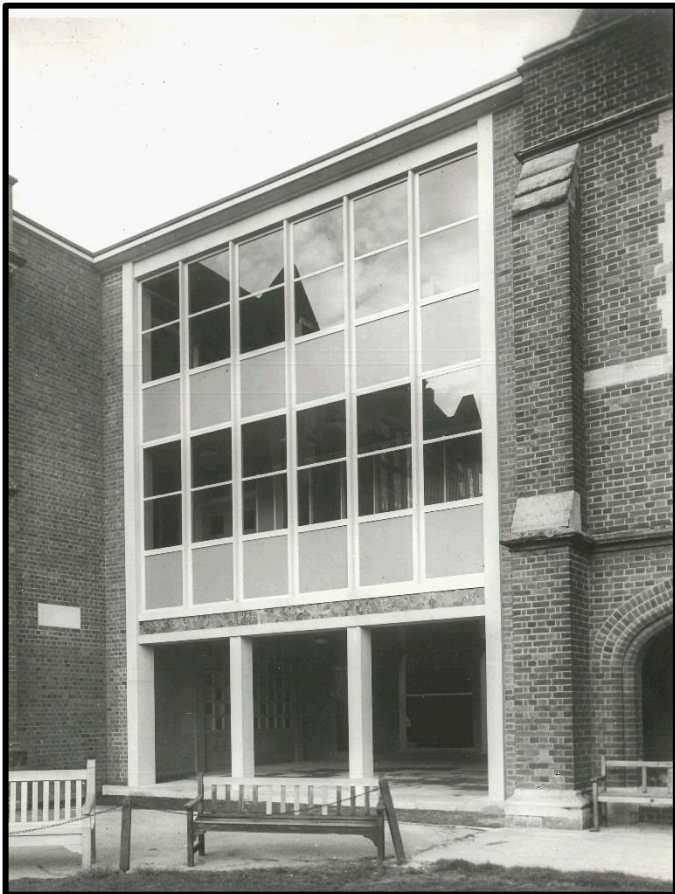
With the generous help of certain Old Eastbournians, the old Nos. 9 and 10 classrooms were converted in 1952 into an extension to the Library and a reading room; but we need more room for boys to work and read quietly in their Houses.

The new Gonville House changing room. Changing rooms are not beautiful or showy things to build. But they and kitchens are vital to the efficient and healthy running of a House, and many of ours could be improved and enlarged.



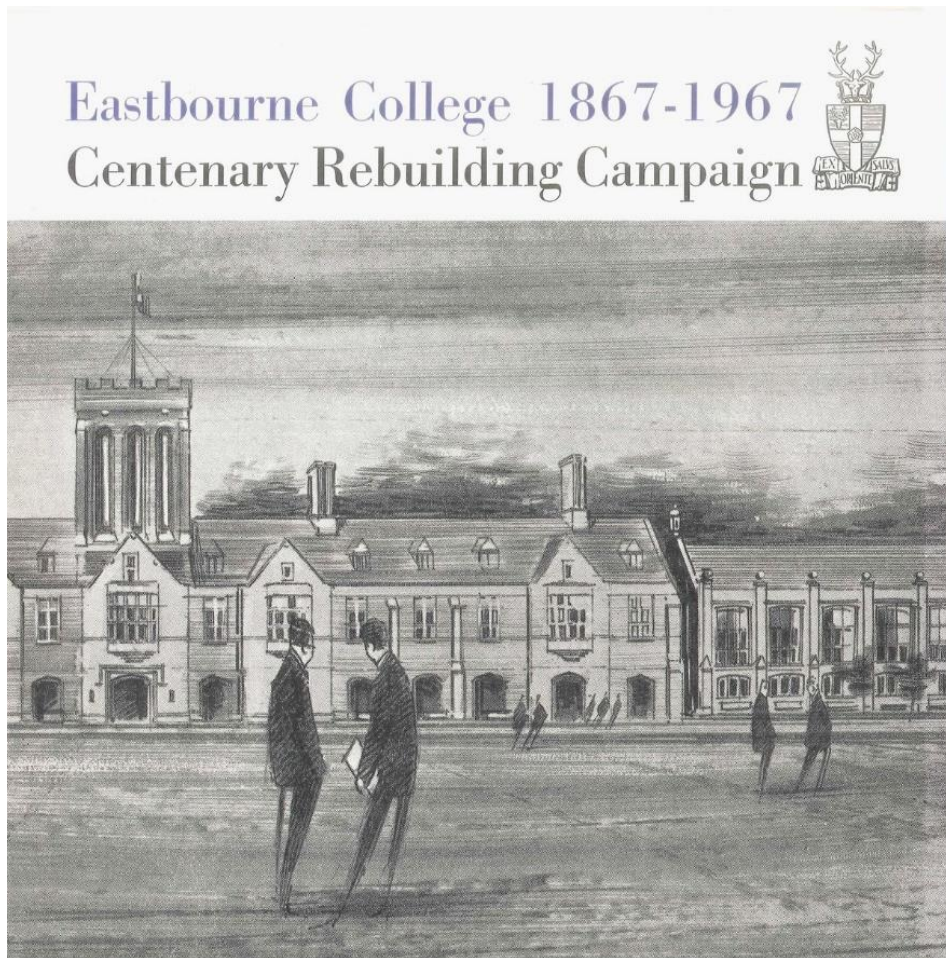
Results of the 1957 appeal

*The 1958 gymnasium in the Wish
(now the site of the Winn Building)*



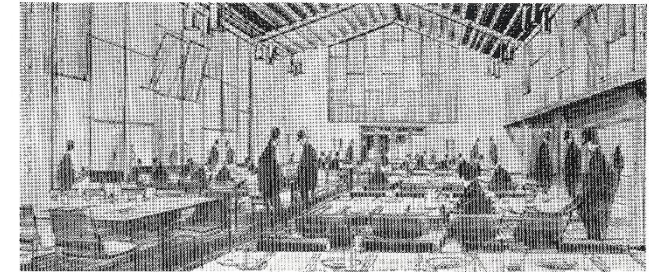
New science laboratories, completed in 1958

The rebuilding appeal launched in 1964



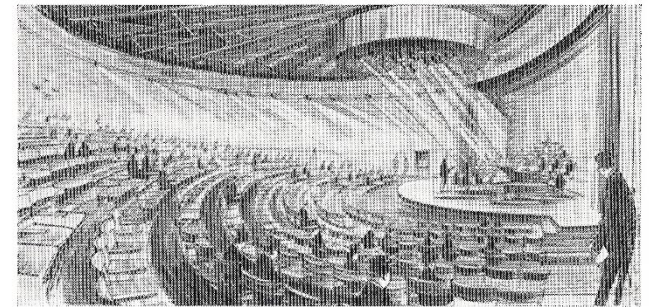
Various proposals included a new assembly hall on the site of the Headmaster's House in Old Wish Road.

EASTBOURNE COLLEGE



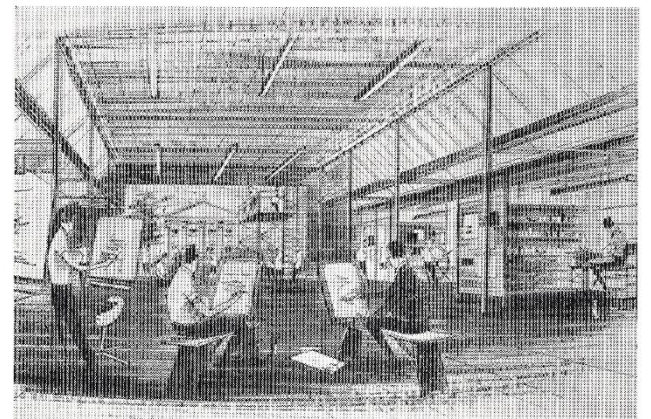
Dining Hall

CENTENARY



Assembly Hall

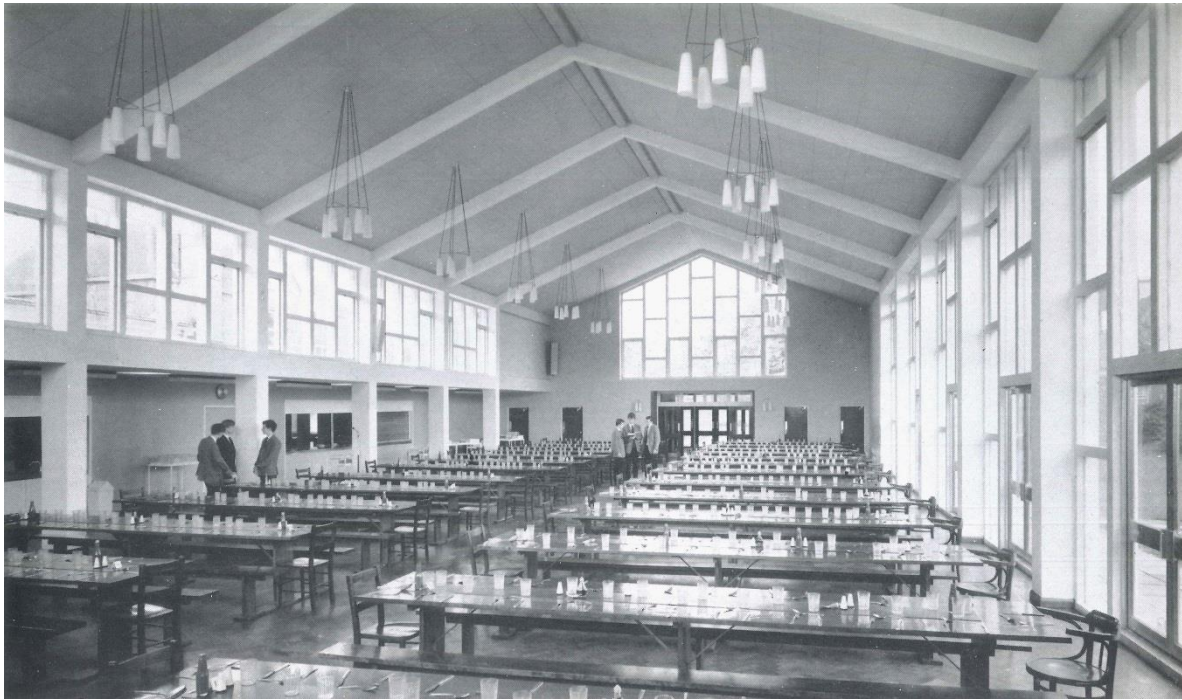
REBUILDING



Crafts Centre

CAMPAIGN

Results of the 1964 campaign



The dining hall opened in 1965

The Technical Activities Centre opened in 1968 (now the site of the Winn Building)

Technical Activities Centre

Woodwork Shop

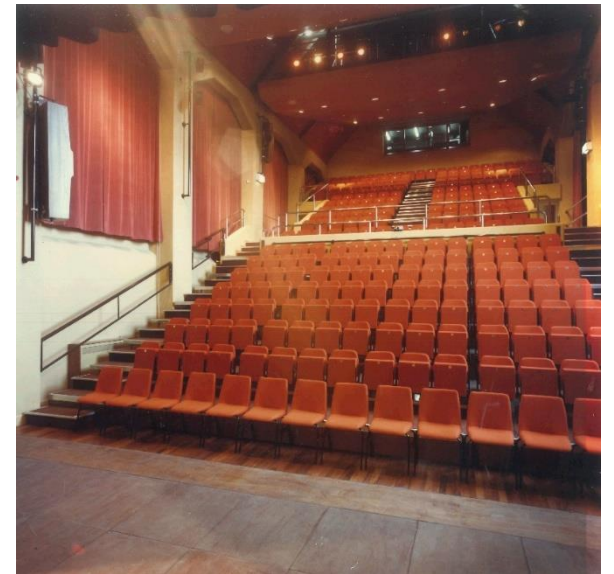


Metal Workshop

Big School fire appeal



Following the destruction of Big School in 1981, an appeal was launched. The resulting donations contributed to the opening of the present College Theatre in 1984.



Results of the 2000 and 2009 appeals



The 2000 appeal raised funds for a new science block (left) and the new D & T Centre pictured below at the official opening with Headmaster Charlie Bush and Sir Charles Masefield (School 1953-58)



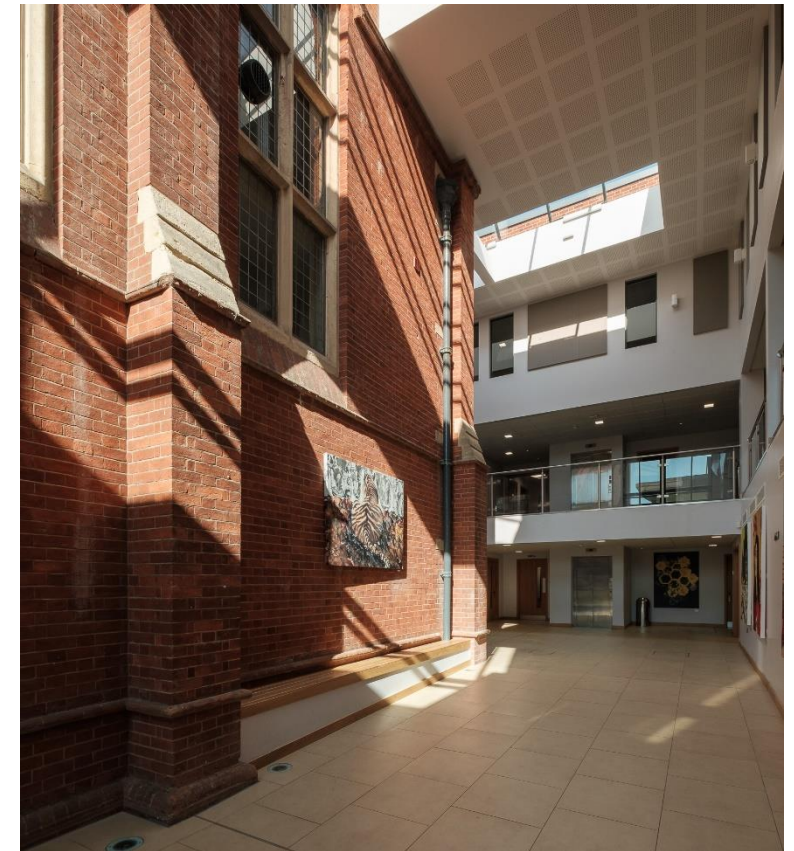
The 2009 appeal helped to fund the Birley Centre, opened in 2011

Project 150



In October 2015, the Project 150 appeal was launched by General The Lord Richards (Wargrave 1965-70) at the House of Lords

The new dining hall in the Winn Building



The Warren Atrium in the Nugee Building