

Autumn Programme  
July–December  
2023

ARTS

Eastbourne College presents

# Autumn arts programme July–December 2023

---

Welcome to the autumn edition of the Eastbourne College arts programme.

Events are open to parents and public audiences and we warmly invite you to sample the wealth of artistic talent and professional expertise on show.

## Booking Information

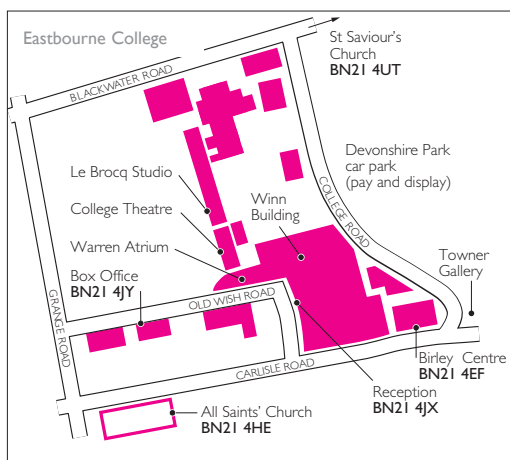
[boxoffice@eastbourne-college.co.uk](mailto:boxoffice@eastbourne-college.co.uk)

[www.wegotickets.com/eastbournecollege](http://www.wegotickets.com/eastbournecollege)

01323 452255

Occasionally details of events change after publication. Please check with the box office.

Tickets are not available through the Eastbourne College Box Office for some events.



Eastbourne College presents

# Arts Exhibition

---



Monday 12 June to Saturday 1 July

Birley Centre

An exhibition celebrating the GCSE and A-level work from art, photography and textiles pupils.

---

By appointment

**Ellie Greenwood (art)**

ezgreenwood@eastbourne-college.co.uk

**Sam Martin (photography)**

samartin@eastbourne-college.co.uk

**Zara Cosgrove (textiles)**

zbcosgrove@eastbourne-college.co.uk

Eastbourne College presents

## Informal Concerts

---



Tuesday 19 September

Tuesday 3 October

Tuesday 17 October

6.45pm

### Birley Centre

Informal concerts provide a platform for pupils to demonstrate a variety of musical talent either as soloist or in an ensemble.

---

There is no entry charge and visitors are always welcome  
Running time 45 minutes

Eastbourne College presents

# Choral Evensong

---



Wednesday 4 October

5.30pm

St Clement Danes

London WC2R 1DH

The Chapel Choir sings Choral Evensong in the  
Central Church of the Royal Air Force.

---

There is no entry charge and visitors are always welcome  
Running time 50 minutes

Eastbourne College presents

## Radio Play: Hitchhiker's Guide to the Galaxy

---



**Wednesday 8 November**  
**Released online at 6.00pm**

### Venue: A Galaxy Near You

Year 11 drama scholars bring you three episodes of Douglas Adams's hilariously madcap sci-fi classic the Hitchhiker's Guide to the Galaxy. This episode will include dazzling foley sound effects. It will be an intergalactic feast for the ears. To be released by EBCTV in podcast form.

Eastbourne College presents

## Live Lounge

---



**Tuesday 14 November**

**6.30pm**

**Birley Centre**

Come and hear the latest line-up in the College's Singer Songwriter Club perform a set of covers and originals. Not to be missed.

---

There is no entry charge and visitors are always welcome  
Running time 90 minutes

Eastbourne College presents

## EBCTV: Surviving School, Episode Three

---



**Wednesday 15 November**

**6.45pm**

### Birley Centre

The third episode of our fictional series drama set in a school, sees a brand-new pupil-led production team take the helm. The series tackles issues faced by our pupils in College and is one hundred per cent written, produced, shot, and edited by pupils.

---

There is no entry charge and visitors are always welcome

Running time 45 minutes

Refreshments available



# St Wilfrid's Hospice Charity Concert with Charles Wookey



Sunday 26 November  
3.00pm–4.30pm

Birley Centre

Come to a joyful afternoon which includes Rachmaninov's second piano concerto.

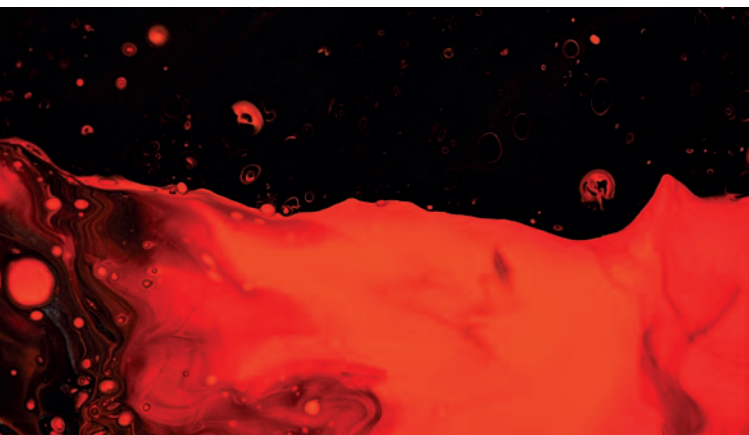
This event is to raise funds for St Wilfrid's Hospice, a community hospice in Eastbourne which relies heavily on voluntary income, but lost donations during the pandemic. The concert will last about an hour, followed by a reception. The orchestra will be conducted by Andy Sherwood, former conductor of many orchestras including the Brighton Youth Orchestra.

Tickets cost £15.00 from [eventbrite.com](https://www.eventbrite.com)

Eastbourne College presents

# Sweeney Todd

---



Tuesday 5–Saturday 9 December

7.00pm

Thursday 7 December

Matinee 3.00pm (no evening performance)

## College Theatre

The much-anticipated College musical is Sondheim's grisly classic *Sweeney Todd: The Demon Barber of Fleet Street*. For the first time in recent history, this year's musical will involve pupils in Year 8 from St Andrew's Prep.

Judge Turpin: *But first, I think, a shave...*

Sweeney Todd: *The closest I ever gave...*

---

Tickets cost £10, [wegottickets.com](http://wegottickets.com)

Proceeds to College charities

Running time 180 minutes including interval

Refreshments available

Eastbourne College presents

## Advent Carol Service

---



**Sunday 19 November 6.30pm**

### College Chapel

In anticipation of Advent Sunday, you are invited to enjoy a selection of readings, antiphons and carols. Choirs from the College and St Andrew's Prep, along with readers, will lead the celebration.

## Community Carol Service

---

**Thursday 14 December 6.00pm**

### All Saints' Church BN21 4HE

Join us at a service of lessons and carols for visitors and the local community. The service will be followed, from 7.00pm, by refreshments in the Warren Atrium. There is no need to let us know if you are coming only to the service. If you would like to join us for refreshments then please complete the form at Eastbournian Society, Events by Monday 4 December.

---

There is no entry charge and visitors are always welcome  
Running times 60 minutes



Autumn Programme  
July–December  
2023